

4. Floor Under Protector

A: REMOVAL

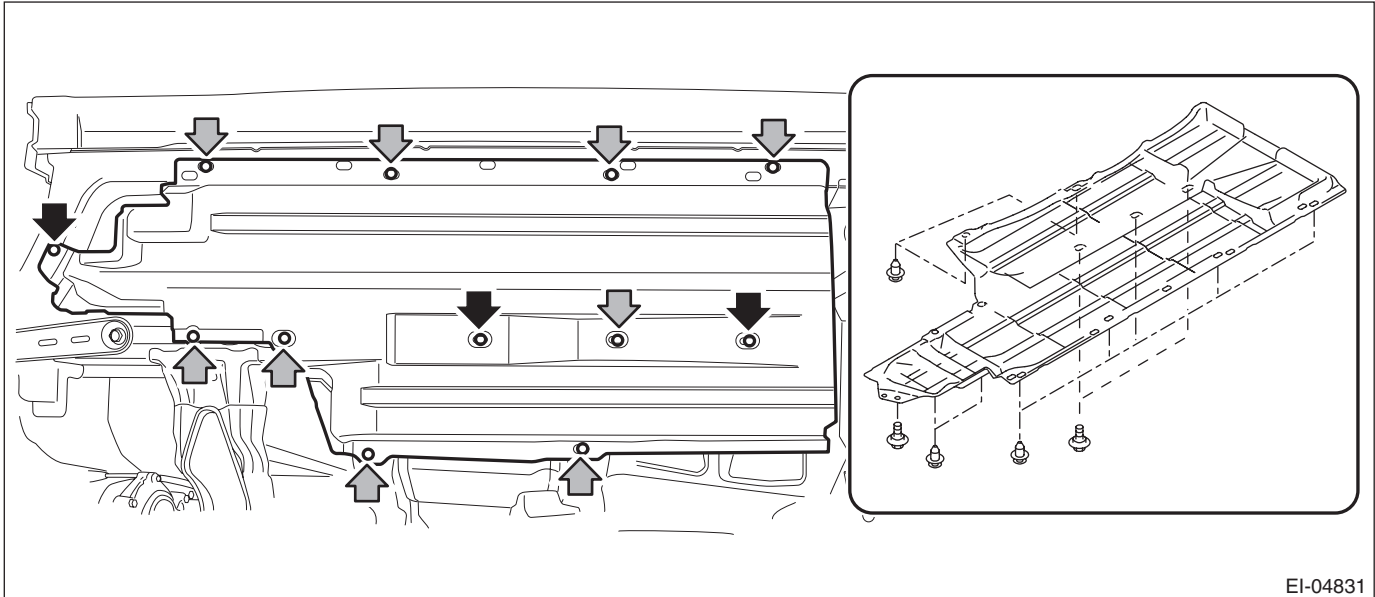
1) Lift up the vehicle.

NOTE:

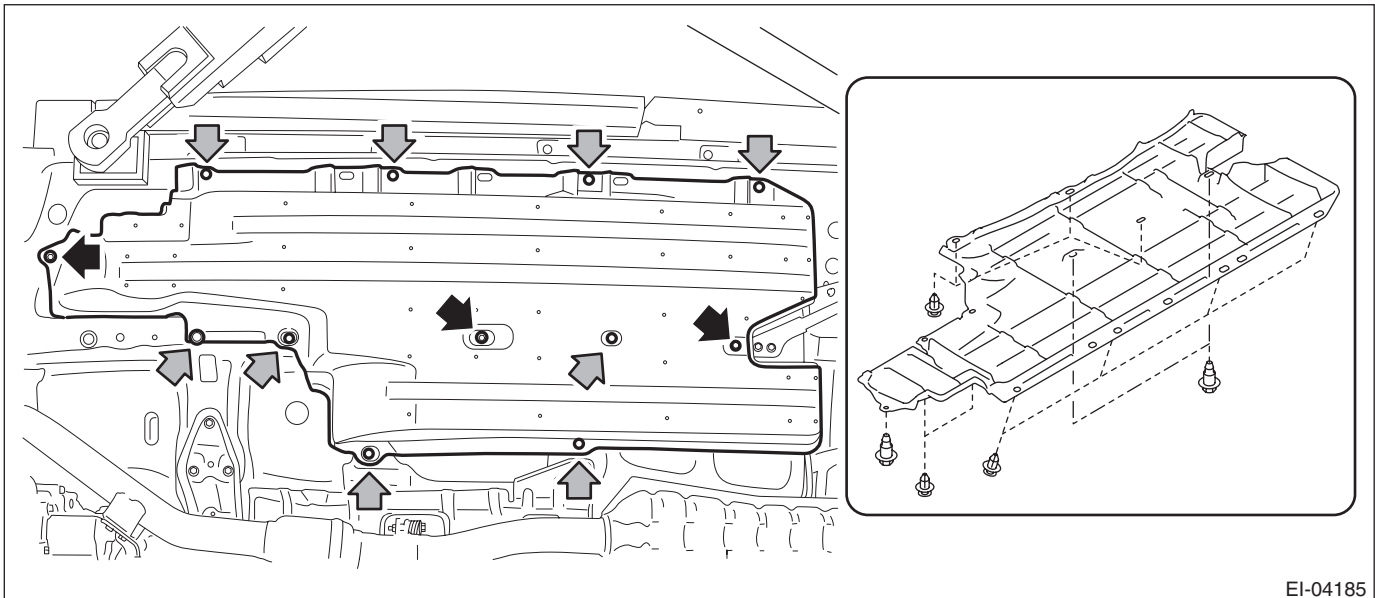
A plate type lift cannot be used.

2) Remove the bolts and clips, and remove the front under protector.

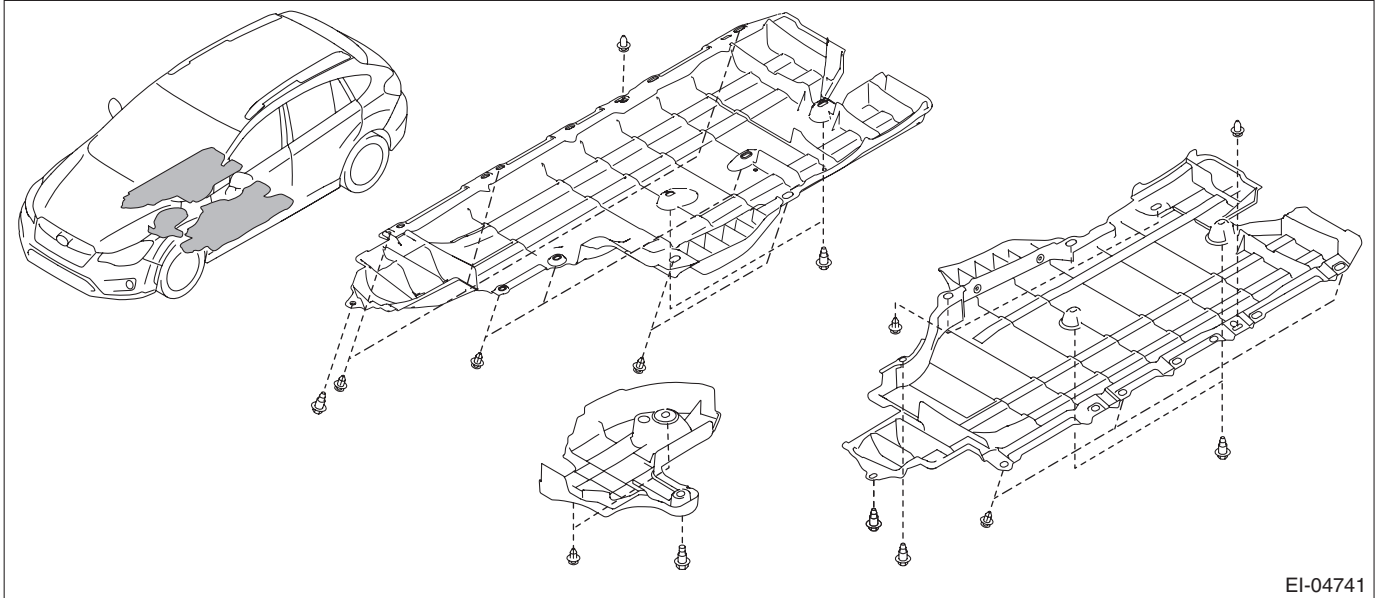
- Type A



- Type B



- Type C



B: INSTALLATION

Install each part in the reverse order of removal.

Tightening torque:

Refer to “COMPONENT” of “General Description”. <Ref. to EI-4, FLOOR UNDER PROTECTOR, COMPONENT, General Description.>